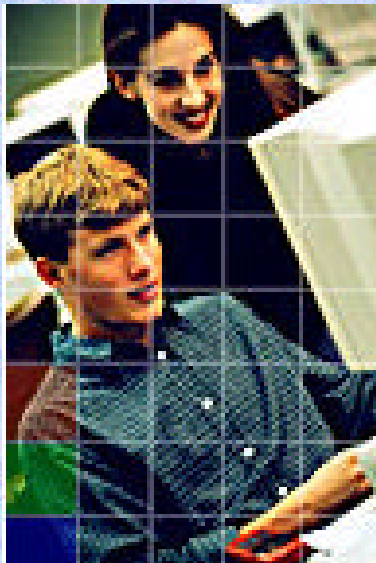




2001 Texas STaR Chart:

a Tool for Planning and Assessing
School Technology and Readiness

aligned with the
Texas Long-Range Plan for Technology



Developed by the
Educational Technology Advisory Committee (ETAC)
Educational Technology Division
Texas Education Agency



Long-Range Plan for Technology 1996-2010

- Teaching and Learning
- Educator Preparation
- Administration and Support
- Infrastructure for Technology



Long-Range Plan for Technology 1996-2010

- Student Technology Standards
- Teacher Technology Standards
- Technology Allotment
- Telecommunications Infrastructure Fund
- Statewide Technology Initiatives



- Technology Literacy Challenge Fund
- E-Rate
- Preparing Tomorrow's Teachers to use Technology
- Technology Planning
- Curriculum Integration
- Student Achievement



Educational Technology Advisory Committee

Should focus on development, implementation, and evaluation of technology guidelines to provide districts with tools for self-assessment to aid in the effective integration of technology across the curriculum.

A Tool to Help School Districts Answer Some Critical Questions

1. What is your district's current educational technology profile?
2. What evidence can be provided to demonstrate the district's progress in meeting the goals of the Long Range Plan for Technology?
3. What areas should your district focus on to improve its level of technology integration to ensure the best possible teaching and learning?



The Texas School Technology and Readiness (STaR) Chart

- Fall 1999 Committee members selected
- Spring 2000 Research existing tools
- Summer 2000 Developed rubric
- Fall 2000 Developed and piloted chart
- Spring 2001 Revised and released on-line version for field test
- Fall 2001 Implemented Texas STaR Chart

2001 Texas STaR Chart



a Tool for Planning and Assessing
School Technology and Readiness
aligned with the
Texas Long-Range Plan for Technology

Texas STaR Chart Instructions

I. Getting Started

Welcome to the Texas STaR Chart site! Coordinate the completion of your district's STaR Chart with your district's director of technology and technology leadership team. One person from each district should be identified as the contact person and that person should enter the district data. If this is your first visit to this site, you should review the instructions and materials below.

II. Instructions for Completing the STaR Chart

Completion of your district's STaR Chart should be a group effort. Some teams have found it helpful to follow the steps below:

Step 1. Print the STaR Chart brochure [Texas STaR Chart Brochure \(pdf file\)](#)

Step 2. Use the print materials in the brochure to complete your district data -
Four *Key Areas* are divided into *focus areas*. Within each *focus area*, indicators are provided for assessing the district's *level of progress*. Select the one *Level of Progress* that best describes your district.

Step 3. Complete the ***STaR Chart Summary*** sheet found in the brochure

Step 4. Now you are ready to complete the [Online STaR Chart Assessment](#)

LOG-IN

The Texas STaR chart is a tool to help Texas school districts develop their own long-range technology plan aligned with the Texas Long-Range Plan for Technology. Districts can use this data to perform a needs assessment, judge progress, set benchmarks and goals, determine funding priorities, provide information for technology planning, and measure the impact of state and local efforts to improve student learning through the use of technology.

Districts will be able to view this data by district, region, district size, and district type (urban, rural, etc.). This data will not be used as an evaluation measure of individual districts.

REGISTER	LOG-IN
<p>County District Code: <input type="text"/></p> <p>Contact Name: <input type="text"/></p> <p>Email Address: <input type="text"/></p> <p>Password: <input type="password"/></p> <p><input type="button" value="Register"/> <input type="button" value="Reset"/></p>	<p>County District Code: <input type="text"/></p> <p>Password: <input type="password"/></p> <p><input type="button" value="Log-In"/> <input type="button" value="Reset"/></p> <p>Did you forget your password? Enter your county district code here and it will be sent to the email address you provided when you registered:</p> <p><input type="text"/></p> <p><input type="button" value="Get Password"/> <input type="button" value="Reset"/></p>

STaR Chart Summary

Using the Texas STaR Chart, select the cells in each category that best describe your district. Enter the corresponding number in the chart below using this scale.

1 = Early Tech 2 = Developing Tech 3 = Advanced Tech 4 = Target Tech

						Totals	Key Area STaR Classification
Key Area I: Teaching and Learning							
Teacher Role and Collaborative Learning	Patterns of Teacher Use	Frequency/Design of Instructional Setting	Curriculum Areas	T A TEKS Assessment	Patterns of Student Use		
.
Key Area II: Educator Preparation and Development							
Content of Training	Capabilities of Educators	Leadership Capabilities of Administrators	Models of Professional Development	Levels of Understanding and Patterns of Use	Technology Budget for Technology Professional Development		
.
Key Area III: Administration and Support Services							
Administrative	Facilities	Food and Nutrition	Health Services	Information Technology	Transportation		
.



- Each Key Area is divided into Focus Areas.
- Within each Focus Area, indicators are provided for assessing the district's Level of Progress.
- It is possible that the district may have indicators in more than one Level of Progress.
- Select the one Level of Progress that best describes your district.



2001 Texas STaR Chart



2001 Texas STaR Chart--Administrative Reports

Item Analysis

Item Analysis by District Size ☐

Filter:

Item Analysis by ESC ☐

ESC Filter:

☐ Include statewide summary

Get Report

Reset

Survey Scores

Survey Scores by District Size ☐

Filter:

Survey Scores by ESC ☐

ESC Filter:

☐ Include statewide summary

Get Report

Reset



District Size 1: Over 20000

District Size 2: 5001 - 2000

District Size 3: 1001 - 5000

District Size 4: 501 - 1000

District Size 5: Under 500

Education Service Center Region 1-20



2001 Texas STaR Chart



Total Surveys for State = 495

State Key Area I: Teachers and Learning Score= 12.43

State Key Area II: Educator Preparation Score= 10.72

State Key Area III: Administrator Score= 10.72

State Key Area IV: Infrastructure Score= 10.72

Statewide Item Analysis by question

Key Area I	1.830	2.333	2.066	2.298	1.878	2.028
Key Area II	2.408	2.159	2.579	2.244	2.040	1.870
Key Area III	2.757	2.525	2.165	2.434	2.901	
Key Area IV	2.458	3.111	2.090	2.917	2.311	

Survey Scores by District Size

Teaching
and
Learning

Educator
Preparation

Administration
and support

Infrastructure

District Size: Over 20000

Scores district size:(21)	12.66	13.28	11.19	12.23	H V C
---------------------------	-------	-------	-------	-------	------------------------



2001 Texas STaR Chart



Total Surveys for State = 495

State Key Area I: Teachers and Learning Score= 12.43

State Key Area II: Educator Preparation Score= 10.72

State Key Area III: Administrator Score= 10.72

State Key Area IV: Infrastructure Score= 10.72

Statewide Item Analysis by question

Key Area I	1.830	2.333	2.066	2.298	1.878	2.028
Key Area II	2.408	2.159	2.579	2.244	2.040	1.870
Key Area III	2.757	2.525	2.165	2.434	2.901	
Key Area IV	2.458	3.111	2.090	2.917	2.311	

District Group (Over 20000) Item Analysis by question (#Reporting Districts=21)

Key Area I	A	1.714	B	2.238	C	2	D	2.428	E	2.380	F	1.904	12.664
Key Area II	G	2.666	H	2	I	2.238	J	2.571	K	1.809	L	2.142	13.426
Key Area III	M	2.904	N	2.142	O	2.428	P	2.571	Q	3.238			13.283
Key Area IV	R	2.047	S	3.095	T	2.142	U	2.904	V	2.047			12.235

Numbers reflect average scores for all items



2001 Texas STaR Chart



District Group (Over 20000) Item Analysis by question (#Reporting Districts=21)													Totals
Key Area I	A	1.714	B	2.238	C	2	D	2.428	E	2.380	F	1.904	12.664
Key Area II	G	2.666	H	2	I	2.238	J	2.571	K	1.809	L	2.142	13.426
Key Area III	M	2.904	N	2.142	O	2.428	P	2.571	Q	3.238			13.283
Key Area IV	R	2.047	S	3.095	T	2.142	U	2.904	V	2.047			12.235
Numbers reflect average scores for all items													

Q:3.238 Funding

A: 1.714 Impact on Teacher Role

S:3.095 Internet Access

K: 1.809 Levels of Understanding

U:2.904 LAN/WAN

and Patterns of Use

1: Early Tech 2: Developing Tech 3: Advanced Tech 4: Target Tech

District Group (5001 - 20000) Item Analysis by question (#Reporting Districts=54)													Totals
Key Area I	A	1.796	B	2.148	C	2.055	D	2.259	E	1.925	F	1.962	12.145
Key Area II	G	2.407	H	2.092	I	2.462	J	2.370	K	1.888	L	1.944	13.163
Key Area III	M	2.740	N	2.296	O	2.351	P	2.5	Q	3.037			12.924
Key Area IV	R	2.333	S	3.074	T	1.888	U	2.925	V	2.481			12.701
Numbers reflect average scores for all items													

Q: 3.037 Funding

A: 1.796 Teacher Role

S: 3.074 Internet Access

E: 1.925 TA TEKS Assessment

U: 2.925 LAN/WAN

K: 1.888 Levels of Understanding

M: 2.740 Vision & Planning

L: 1.944 Budget for Tech Prof. Dev.

T: 1.888 Distance Learning

1: Early Tech 2: Developing Tech 3: Advanced Tech 4: Target Tech

District Group (1001 - 5000) Item Analysis by question (#Reporting Districts=169)													Totals
Key Area I	A	1.775	B	2.349	C	2.017	D	2.230	E	1.934	F	1.964	12.269
Key Area II	G	2.366	H	2.059	I	2.544	J	2.260	K	2.017	L	1.804	13.05
Key Area III	M	2.763	N	2.508	O	2.207	P	2.455	Q	2.857			12.79
Key Area IV	R	2.289	S	3.053	T	1.881	U	2.934	V	2.242			12.399
Numbers reflect average scores for all items													

Q: 2.862 Funding

S: 3.053 Internet Access

U: 2.934 LAN/WAN

M: 2.763 Vision & Planning

A: 1.775 Teacher Role

E: 1.934 TA TEKS Assessment

F: 1.964 Pattern of Student Use

L: 1.804 Budget for Tech Prof. Dev.

T: 1.881 Distance Learning

1: Early Tech 2: Developing Tech 3: Advanced Tech 4: Target Tech

District Group (Under 500) Item Analysis by question (#Reporting Districts=155)													Totals
Key Area I	A	1.825	B	2.361	C	2.090	D	2.335	E	1.690	F	2.070	12.371
Key Area II	G	2.387	H	2.245	I	2.587	J	2.141	K	2.109	L	1.864	13.333
Key Area III	M	2.709	N	2.567	O	1.909	P	2.341	Q	2.877			12.403
Key Area IV	R	2.709	S	3.174	T	2.225	U	2.825	V	2.283			13.216
Numbers reflect average scores for all items													

Q: 2.877 Funding

A: 1.825 Teacher Role

S: 3.174 Internet Access

E: 1.690 TA TEKS Assessment

U: 2.825 LAN/WAN

F: 2.070 Pattern of Student Use

M: 2.709 Vision & Planning

L: 1.864 Budget for Tech Prof. Dev.

R: 2.709 Students per computer

O: 1.909 Staffing

1: Early Tech 2: Developing Tech 3: Advanced Tech 4: Target Tech



2001 Texas STaR Chart



ESC 04

total surveys in region = 33

Item Analysis by Focus Area Question													Totals
Key Area I	A	1.787	B	2.363	C	2.060	D	2.484	E	2.060	F	1.909	12.663
Key Area II	G	2.666	H	2.151	I	2.484	J	2.575	K	1.909	L	2.030	13.815
Key Area III	M	2.878	N	2.242	O	2.242	P	2.545	Q	2.939			12.846
Key Area IV	R	2.333	S	3.121	T	1.757	U	2.939	V	2.454			12.604

Q: 2.939 Funding

A: 1.787 Teacher Role

S: 3.121 Internet Access

F: 1.909 Student Use

U: 2.939 LAN/WAN

K: 1.909 Levels of Understanding

T: 1.757 Distance Learning

1: Early Tech 2: Developing Tech 3: Advanced Tech 4: Target Tech

ESC 01

total surveys in region = 14

Item Analysis by Focus Area Question													Totals
Key Area I	A	1.5	B	2.214	C	2.214	D	2.071	E	1.642	F	1.928	11.569
Key Area II	G	2.428	H	1.785	I	2.357	J	2.071	K	1.857	L	1.571	12.069
Key Area III	M	2.5	N	2.285	O	1.714	P	2	Q	2.928			11.427
Key Area IV	R	2.428	S	3	T	2.071	U	3.142	V	2.357			12.998

Q: 2.928 Funding

S: 3.0 Internet Access

U 3.142 LAN/WAN

A: 1.5 Teacher Role

E: 1.642 TA TEKS Assessment

F: 1.928 Student Use

H: 1.785 Capability of Educators

K: 1.857 Levels of Understanding

L: 1.571 % Budget for Professional Dev.

O: 1.714 Staffing

1: Early Tech 2. Developing Tech 3: Advanced Tech 4: Target Tech



2001 Texas STaR Chart



Total Surveys for State = 495

State Key Area I: Teachers and Learning Score= 12.43

State Key Area II: Educator Preparation Score= 10.72

State Key Area III: Administrator Score= 10.72

State Key Area IV: Infrastructure Score= 10.72





Statewide Item Analysis by question

Key Area I	1.830	2.333	2.066	2.298	1.878	2.028
Key Area II	2.408	2.159	2.579	2.244	2.040	1.870
Key Area III	2.757	2.525	2.165	2.434	2.901	
Key Area IV	2.458	3.111	2.090	2.917	2.311	

ESC 01

Total Surveys in Region = 14

Scores

Key Area I -(11.57)	 DEVELOPING
Key Area II - (9.714)	 DEVELOPING
Key Area III - (11.42)	 DEVELOPING
Key Area IV - (13)	 DEVELOPING



2001 Texas STaR Chart



a Tool for Planning and Assessing

School Technology and Readiness

aligned with the
Texas Long-Range Plan for Technology



Developing a District STaR Profile

The printed STaR Chart materials may be used for discussion and collection of data. The on-line STaR Chart provides a district report that includes charts, graphs, and a customized STaR Chart. Use the instructions on the printed Chart and those on-line at the web site to develop your district STaR profile.



Districts can use this data to:

- perform a needs assessment
- set benchmarks and goals
- judge progress
- determine funding priorities
- prepare grant applications
- provide information for technology planning
- measure the impact of state and local efforts to improve student learning through the use of technology



The State can use this data to:

- identify needs
- document progress
- influence state policies
- determine funding priorities
- target grant opportunities
- provide information for technology planning
- identify best practices
- measure the impact of state and local efforts to improve student learning through the use of technology



Next steps:

- Promote the use of the district-level chart
- Develop campus-level chart
- Advocate for strategies that will result in all districts participating in the use of the Texas STaR Chart



Next steps:

Develop specifications for the Texas STaR Chart Portal that will

- Allow educators to drill down in every cell of the matrix to find information, video vignettes, and other resources to help in achieving that benchmark
- Provide a feature-set for access, manipulation, analysis, and comparison of Texas STaR Chart data similar to those in the student performance data warehouse currently available on the TEA website.

ETAC will also



Conduct midpoint review and adjustment of the Long-Range Plan for Technology 1996-2010 to ensure recommendations remain appropriate, determine if new recommendations are warranted, and create benchmarks or indicators that will let us know where we are as a state and as individual schools and districts in achieving the targets addressed in the Long-Range Plan for Technology.



www.tea.state.tx.us/technology/etac/txstar



2001 Texas STaR Chart



a Tool for Planning and Assessing
**School Technology and
Readiness**

aligned with the
Texas Long-Range Plan for Technology

